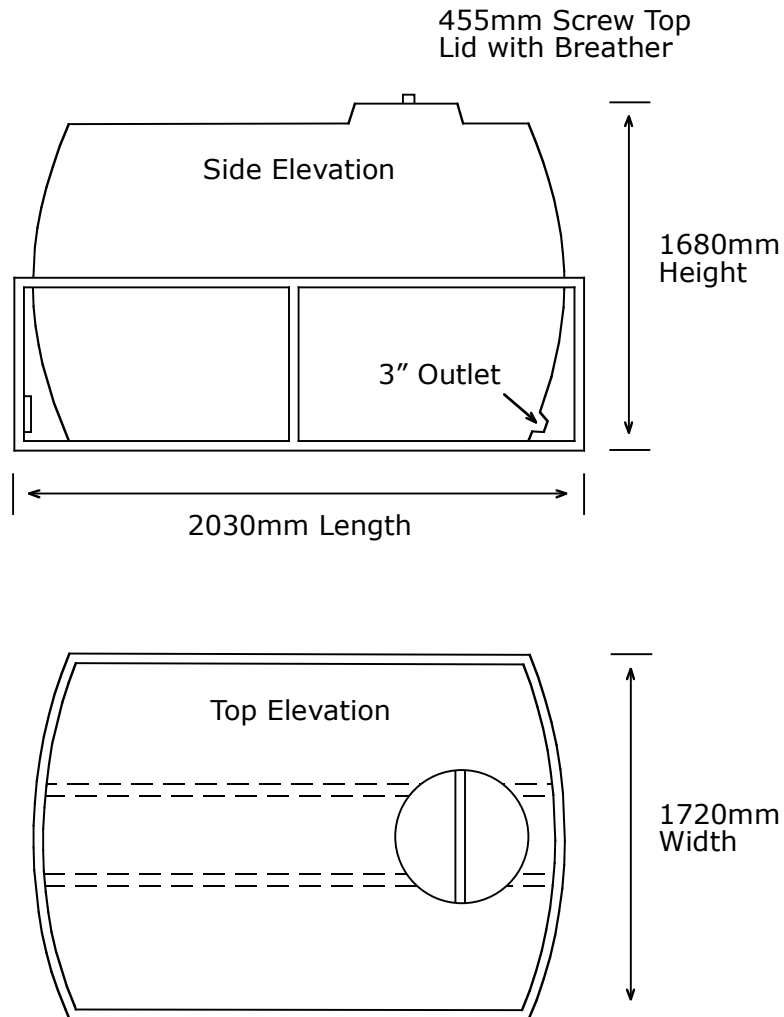




National Poly Industries

National Poly Industries T/A
Bundaberg Poly Industries
ACN 107 251 267 ABN 52 107 251 267
89 Childers Rd. Bundaberg Qld 4670
Phone: (07) 4131 3400
Fax: (07) 4155 2088
Free Call: 1800 651 004
Email: info@bundypolyind.com.au

Transporter 3,000 Litre (660 Gallon)



Note: The above dimensions and capacity are approximates only and should therefore be used for guidance.

Weight approx. full: 3225kg (water) / 4425 kg (molasses).

Weight approx. empty: 225kg (water) / 275kg (molasses).

Supplied with: 455mm Screw Top Lid with Breather
Brass Male Threaded Outlet
Gate Valve up to 3"
50 x 50 x 3mm Duragal Steel Frame.

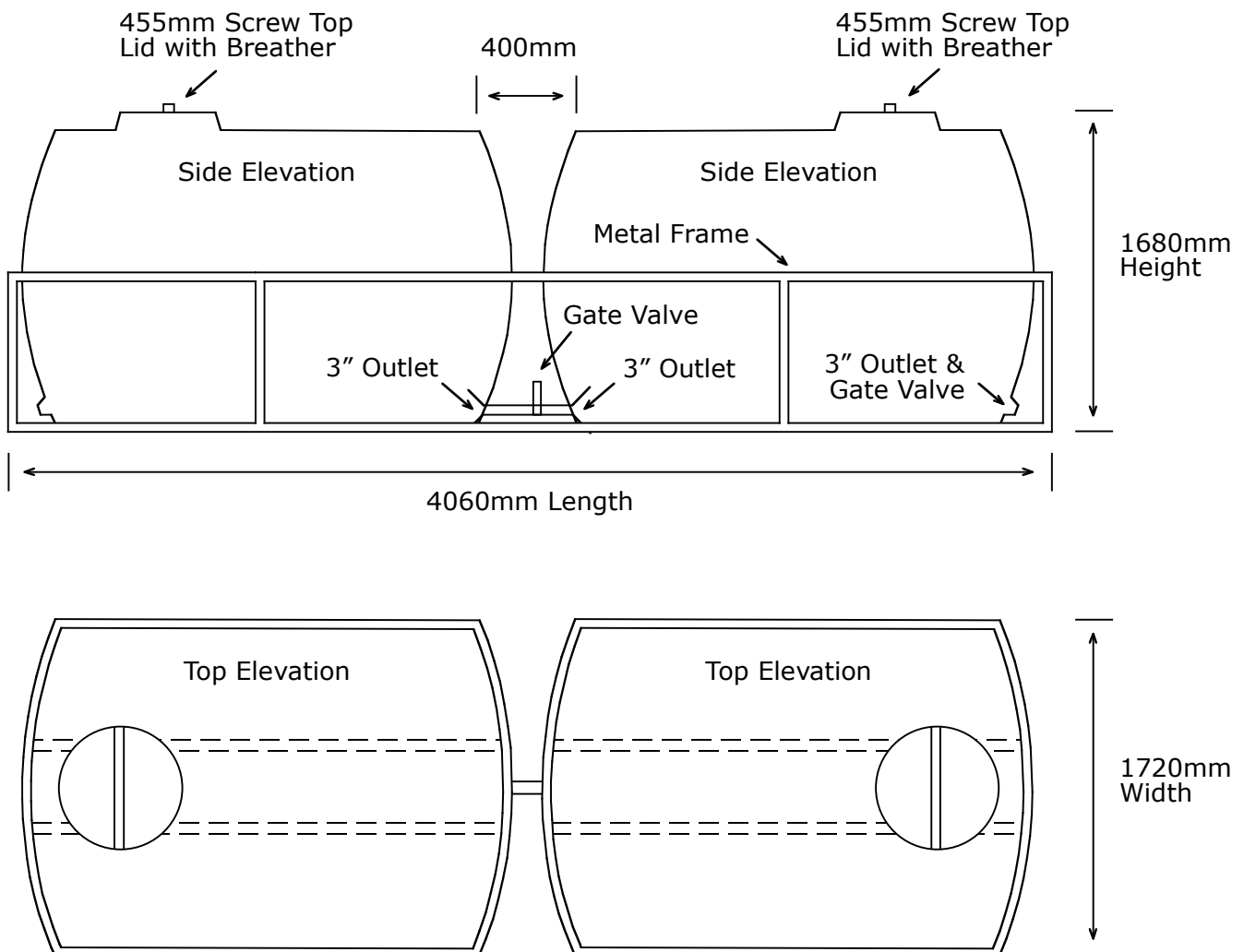
Available Colours:
Black.



National Poly Industries

National Poly Industries T/A
Bundaberg Poly Industries
ACN 107 251 267 ABN 52 107 251 267
89 Childers Rd. Bundaberg Qld 4670
Phone: (07) 4131 3400
Fax: (07) 4155 2088
Free Call: 1800 651 004
Email: info@bundypolyind.com.au

Transporter 6,000 Litre (1,320 Gallon)



Note: The above dimensions and capacity are approximates only and should therefore be used for guidance.

Weight approx. full: 6450kg (water) / 8850kg (molasses).

Weight approx. empty: 450kg (water) / 550kg (molasses).

Supplied with: 2 x 455mm Screw Top Lids with Breathers
3 x 3" Brass Male Threaded Outlets
2 x 3" Gate Valve
1 x Connector Pipe
50 x 50 x 3mm Duragal Steel Frame.

Available Colours:
Black.